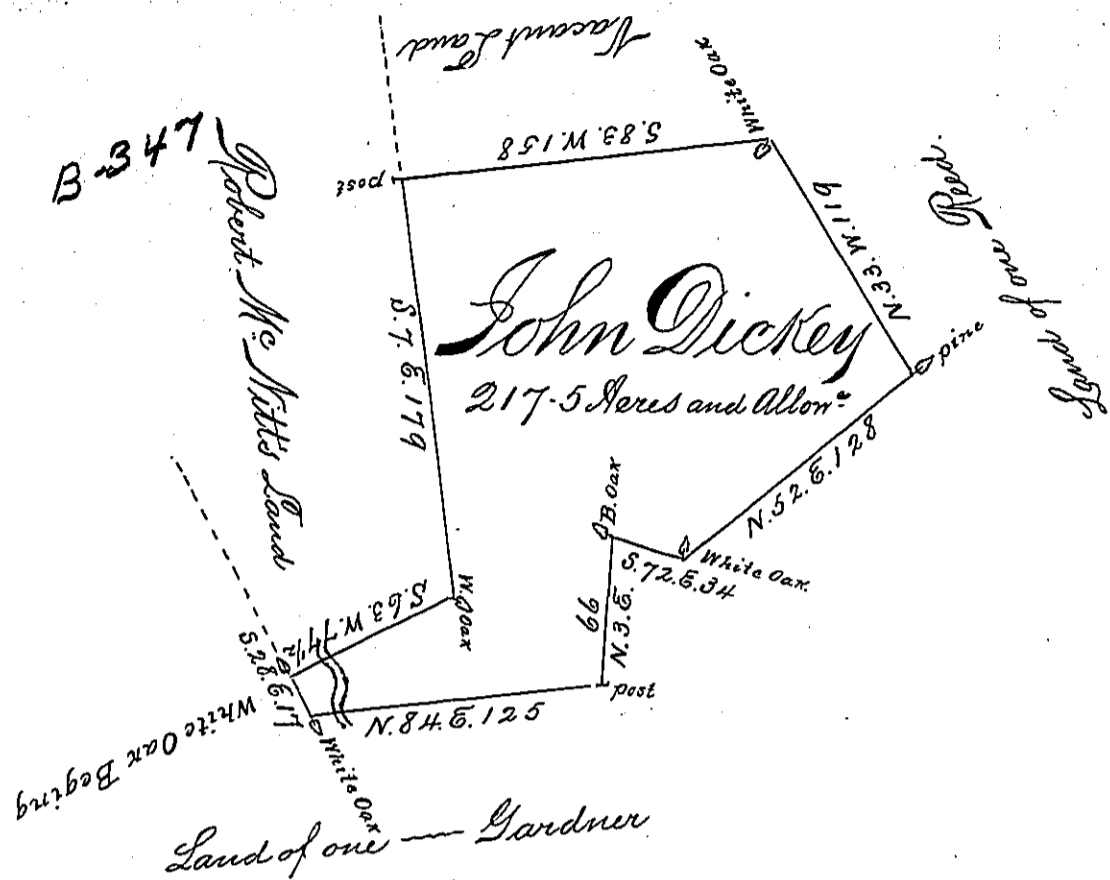


H-31-137



The Draught of a Tract of Land called  
 situate on a Branch of Shavers Creek in the County  
 of Cumberland containing Two Hundred seven-  
 teen Acres and an half Acre with the usual Allow-  
 ance of Six Acres 10 Cent: for Roads. Survey'd the  
 18th day of October 1767 In Pursuance of an  
 Order of Survey to John Dickey bearing Date  
 at Philad<sup>a</sup> the 2<sup>d</sup> day of May Anno Dom: 1767  
 and numbered 3573

Wm Maclay D.S

To John Luxens Esq: S.G.  
 of Pennsylvania

IN TESTIMONY that the above is a copy of the original remaining on file in the  
 Department of Internal Affairs of Pennsylvania, made con-  
 formably to an Act of Assembly approved the 16th day of  
 February, 1833. I have hereunto set my Hand and caused  
 the Seal of said Department to be affixed at Harrisburg, this

first day of September 1896.

James Watta  
 Secretary of Internal Affairs.